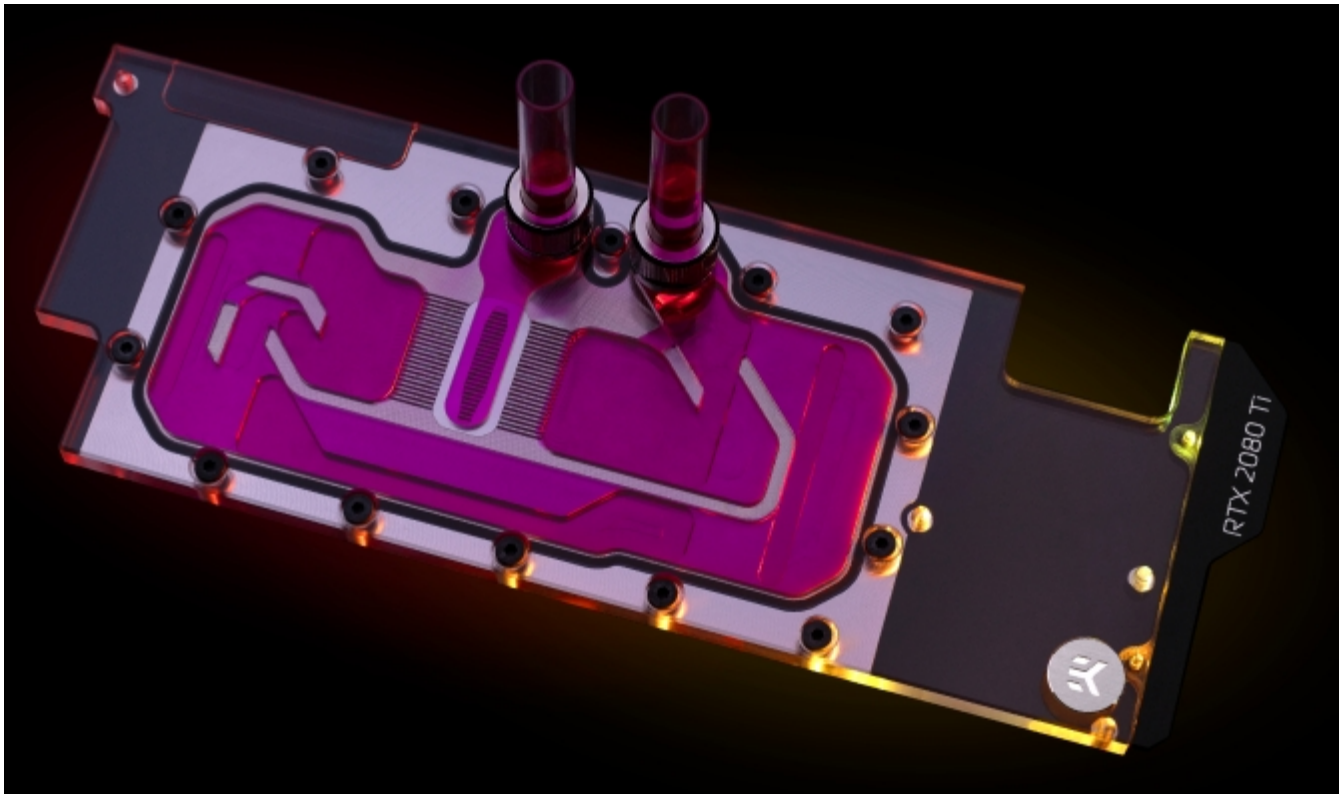


The Narrowest GPU Water Block From EK

Written by Alice Marshall
25 March 2020

EK Water Block presents a variant of the extent compatibility high-performance water block designed for Nvidia GeForce RTX 2080 Ti graphics cards based on the reference design-- the EK-Quantum Vector Direct RTX RE Ti D-RGB.



The version of the water block has the terminal removed. Instead the fittings are screwed directly into the top, allowing for a narrow enclosure and adding compatibility with space-constrained cases. The water block still uses the EK single-slot slim look, and covers the entire length of the PCB. The base of the block is CNC-milled out of nickel-plated electrolytic copper, while the top is machined out of cast acrylic. EPDM O-rings ensure the sealing, and pre-installed brass standoffs allow for easy installation.

EK-Quantum Vector series water blocks use an open split-flow cooling design characterised by low hydraulic flow restrictions. Customers can use it with weaker water pumps or pumps running on low-speed settings and still achieve top performance. The jet plate and fin structure geometry are also optimised for even distribution with minimal losses, even in reversed water flow scenarios.

The Narrowest GPU Water Block From EK

Written by Alice Marshall
25 March 2020

The EK-Quantum Vector Direct RTX RE Ti D-RGB is compatible with reference GeForce RTX 2080 Ti graphics cards. EK also offers retention backplates for further passive cooling, with a choice of either nickel-plated or black anodised variants.

Go [EK-Quantum Vector Direct RTX RE Ti D-RGB](#)