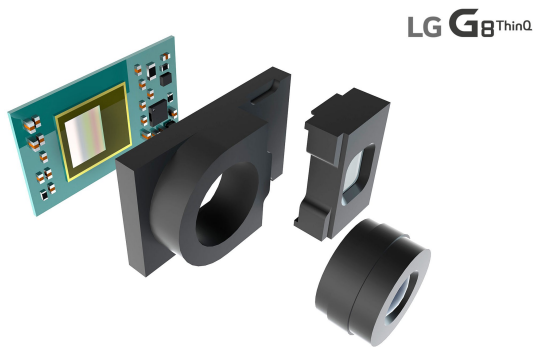


LG Presents Own 3D Front-Facing Camera

Written by Frederick Douglas
12 February 2019

LG is set to announce the latest flagship smartphone at MWC 2018, but it couldn't wait to detail the front-facing camera inside the device-- a collaboration with Infineon Technologies complete with Time-of-Flight (ToF) technologies).



Dubbed the REAL3, the image sensor chip combines Infineon and pmdtechnologies algorithms for processed 3D point clouds, or the set of data points produced by 3D scanning. In addition, while other 3D technologies calculate the distance of an object from the camera lens via complex algorithms, the ToF sensor chip captures infrared light as it is reflected off the subject.

In other words, the sensor is designed to rival the facial recognition and augmented reality capabilities of solutions such as Apple FaceID, all while using less power and operating under all kinds of lighting conditions. Or so LG claims, at any rate.

“Keeping in mind LG’s goal to provide real value to its mobile customers, our newest flagship was designed with ToF technology from inception to give users a unique and secure verification system without sacrificing camera capabilities,” the company adds. “The LG G8 ThinQ featuring ToF will be the optimal choice for users in search of a premium smartphone that offers unmatched camera capabilities.”

Go [LG and Infineon to Introduce LG 8 ThinQ With Front-Facing Time-of-Flight Camera](#)