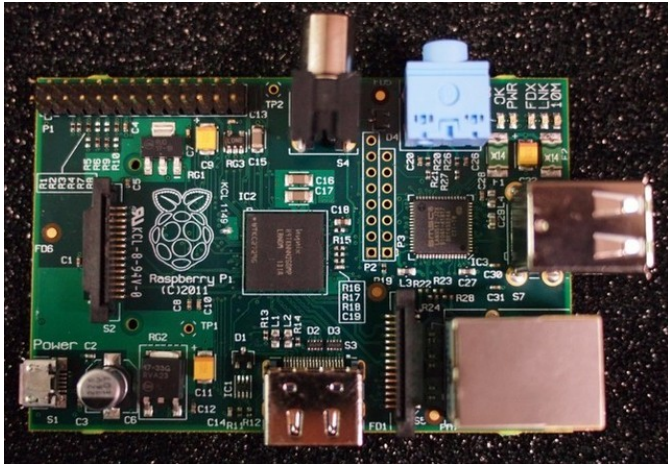


## The Sweet \$25 Credit Card-Size PC

Written by Marco Attard  
16 February 2012

---

The Raspberry Pi Foundation announces the first batch its intriguing low-cost Linux micro-PCs has just entered production-- and pre-orders should start shipping from February 20 2012.



Designed as an affordable PC ideal to get children into computer programming, the Raspberry Pi is a tiny computer the size of a credit card. Currently a simple open board, it carries an ARM processor (running at 700MHz) on top of a Broadcom BCM2835 SoC, together with a Videocore 4 GPU the Foundation says is capable of HD playback.

It runs on ARM Linux, with the OS stored inside an SD card, meaning users can easily change OS (to another ARM Linux version) by replacing the SD card root partition.

Two models will be available-- Model A (with 128MB RAM and x1 USB port, costing \$25) and the higher-end Model B (with 256MB RAM, x2 USB ports and Ethernet connection, costing \$35). Both models carry RCA and HDMI outputs, and connect directly into TVs.

Soon the Raspberry Pi is also getting a proper commercial release-- on Q3 2012, as a cased device with "a polished educational software stack." The Foundation hopes the cased version will retain the current low price point, and will aim it at customers wanting a tiny home media centre PC as well as educators.

It all sounds very interesting, and we admit we already want to get our hands on one.

## The Sweet \$25 Credit Card-Size PC

Written by Marco Attard  
16 February 2012

---

Go [Raspberry Pi](#)